



## RIOSCAN Laser Barcode Scanner

### Quick Guide



Model no.:

**iLS6300FS**

### Introduction

Designed primarily for smartphone, the iLS6300FS is a 1D barcode scanner that allows you to scan various barcoded items and send data to smartphone.

Its in-built 1D Laser Engine allows you to reliably read 1D barcodes on various shapes and is a great space-saver for busy or limited workspaces.

It supports not only iOS devices through Bluetooth communication, but also Android OTG devices through USB cable

### Delivery content

- \* Bluetooth Barcode scanner x 1
- \* Charging cradle x 1
- \* PCB material board+3 screws x 1
- \* Holder for smartphone x 1
- \* USB cable x 1
- \* Quick instructions x 1

### Limited Warranty

Riotec provides a one year limited warranty.

This warranty does not cover any product which has been subject to improper use, neglect or unauthorized repair or installation.

This warranty does not cover consumable parts. (Cables & batteries are consumables.)

### Safety instructions

- \* The product is equipped with a Class 1 laser.
- \* Never look into the laser beam and never point it at people or animals. Laser radiation can seriously damage your eyes.
- \* Do not point the laser beam at mirrors or other reflective surfaces. The uncontrolled, reflected beam may strike people or animals.
- \* Don't put scanner in places excessively high temperatures, such as expose under direct sunlight.
- \* Don't use scanner in extremely humid area or drastic temperature change
- \* The rechargeable battery is permanently built into the product and cannot be replaced.
- \* Never damage the rechargeable battery. Damaging the casing of the rechargeable battery might cause an explosion or a fire!

### Charging:

1. Please switch on and charge scanner for 3~4 hours before first use as shown on Fig.
2. When user charge smartphone & scanner, please use smartphone original USB power adapter
3. The cradle functions as a charger for the scanner. Even if the scanner's battery is full, the cradle will continue to supply power to the scanner. We suggest removing the scanner from the cradle when fully charged.
4. When you charge scanner & smartphone, please enter Wired OTG mode & switch to "C- Charging mode".



Fig. 1

Fig. 2



iLS6300FS supports **BT communication mode** (for iOS) and **wired OTG communication mode** (for Android OTG devices)  
 If you want to switch to another mode, please read the below configuration code first.



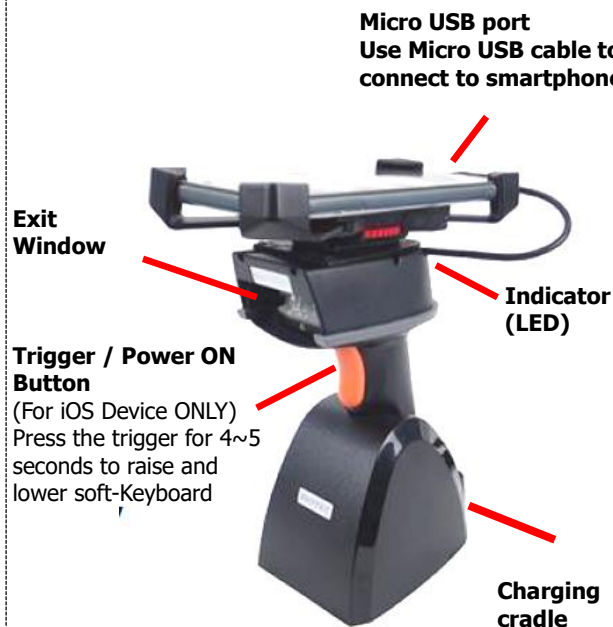
Bluetooth communication



wired OTG communication mode  
(default)

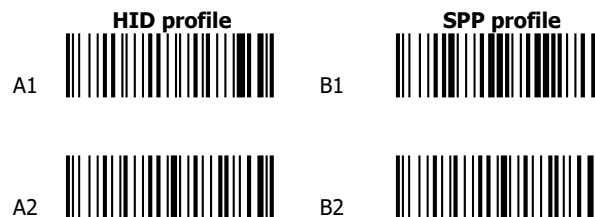
## Operating elements

\* Please switch ON and charge scanner for 3~4 hours at first time before use.

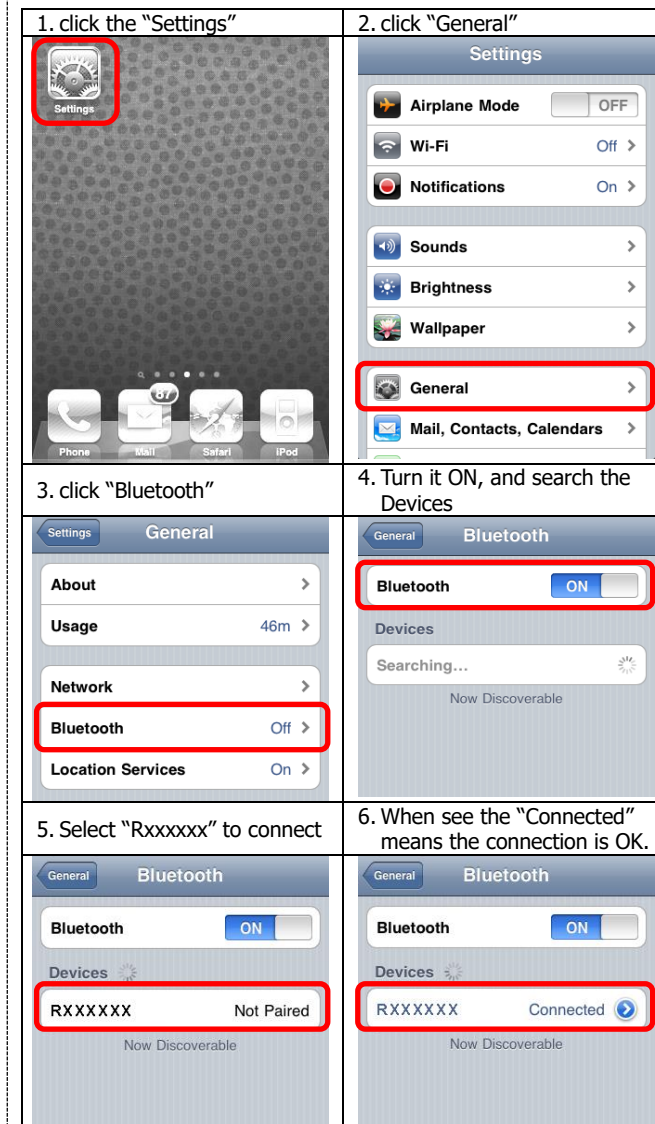


## How to Connect to Smartphone via BT

1. Make sure the default is **BT mode** (page #2) & your device has BT HID or SPP profile
2. Turn off Power-Saving mode on your smartphone/tablet
3. Then, choose HID or SPP profile and scans the following 2 settings codes before connecting to smartphone/tablet.  
 (A1 → A2 or B1 → B2)  
 If you don't know which profile to choose for your device, try HID first, then, SPP.



4. Please complete the connection procedures as the above photos.
5. After the devices are paired, the screen will show "Connected". (see step #6 above)
6. Before using WordPad file or appropriate APP, please set keyboard language of device to **US English**. Then, scan the barcodes and the barcode data will show on the cursor side. If the data cannot be sent to smartphone/tablet, please scan the "Reset Configuration to Defaults" setting codes (on page #3).



(example: pairing with iPhone)

### Notes 1:

- \* This product complies with Bluetooth standards. This device used with this product must support the same SPP or HID standard. For Bluetooth devices with other profiles we cannot guarantee a connection before the product has been tested.
- \* The communication speed and range of the product may vary due to obstacles and radio interference between the product and device. Condition on the host device may also effect the communication speed and range of the scanner

### Note 2:

- \* When the battery power is too low, the Orange LED will flash and beep once. Scanner should be charged immediately. If scanner shuts down it is recommended to charge it fully then power it back on.



**Before entering BT mode, you must switch to right "Charging mode" first.**

**Then, cradle can supply power to iOS / Android device (through micro USB cable) & scanner simultaneously.**

**Indicator (LED)  
Please check the "LED Indicator Information" on page #3**

### Reset Configuration to Defaults

(scan from A1 to A3 for HID profile or B1 to B4 SPP profile)



Internal engine (laser light) will be restarted (flashing) whenever the scanner position on the Cradle or pick up from Cradle. In case this Annoyed you, can disable it by the setting code offered below.



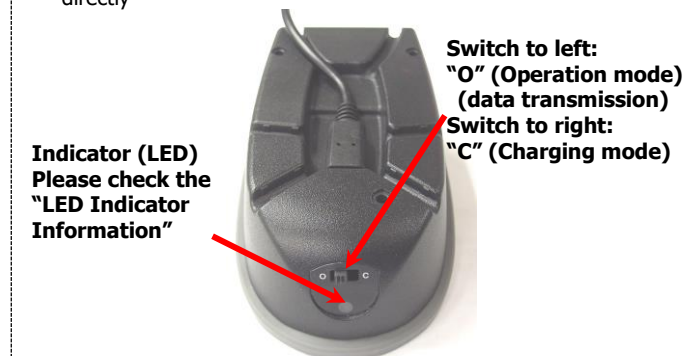
**ENABLE**



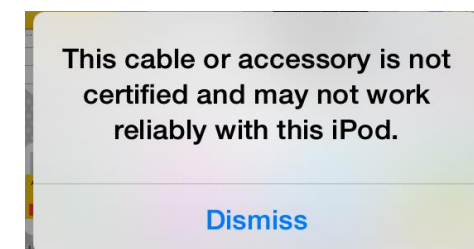
**DISABLE**

### How to Connect to Smartphone via OTG cable

1. Make sure you enter **wired OTG mode** (page #2) and your Android device supports OTG functionality.
2. Make sure scanner is in **"O" (OPERATION MODE)** (see below)
3. Connect scanner to Android OTG device through micro USB cable.
4. Scan the barcode
5. Open app on smartphone/tablet & data will be sent to the app directly



LED Indicator Information	
Orange LED ON	Full charged
Orange LED Flashing	Charging / Low battery
Red LED ON	Offline / out of service
Green LED ON	Good read
Orange LED ON	Good read (Batch mode)



After the scanner connects to your iOS device and is inserted into cradle, it may display the above message. If this happens, remove and reinsert device into cradle.

## Keyboard Country

### (Wired OTG mode only)

Scan the appropriate country code as below to program the keyboard layout for your country or language. As a general rule, the following characters are supported, but need special care for countries other than the United States:

@ | \$ # { } [ ] = / ' \ < > ~



USA  
(Original setting)



Norway



Germany



Sweden



Denmark



Switzerland



Italian



France



Vietnam



Spain



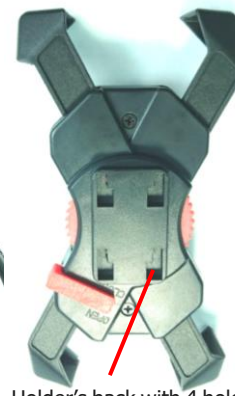
Portugal



Hungary



4 Elevated Studs to fit into the 4 holes of the Holder's back.



Holder's back with 4 holes to fit on and lock up with the 4 studs the scanner.



Holder's front side: Make sure the red switch is on the right side (exactly as the above picture shows), when fitting the 4 holes of the holder to the 4 studs of the scanner



1. Place the mobile device holder by having the side of **open and close red switch** on the right side of the scanner as presented on the above image.
2. **CAUTION:** Please do not pull or press on any of the 4 extensions or legs of the holder, for it can unbalance and disrupt the normal function of the holder's 4 extensions.  
Place the mobile device **holder** lightly on the top of the base, so the 4 elevated studs fit into the 4 holes of the holder.





1. Holder's front side: Shift and Hold the red switch to **Open** while you rotate the wheel either way, in order to shrink or spread the 4 extensions.
2. **Do not pull or push the 4 extensions, nor extend the wheel across the limit**, for it can disrupt the balance and functionality of the holder.
3. **Use mobile device less than 14.5 cm in length.**

3. Press the holder to the scanner firmly and **draw back very carefully** until you hear a low clicking sound.
4. To **separate the holder from the scanner**: Press on the holder towards the scanner firmly, then **push it forward carefully**.
5. **IMPORTANT:** We do not recommend the repetitive action of detaching and reattaching the holder.
6. Place the smartphone onto holder (**Recommendation:** use mobile device less than 14.5 cm in length), plug the micro usb to the mobile device, then close in the extensions.
7. Push in the tiny rectangular switch at the bottom of the handle, then switch the scanner to Operation mode, now it can scan directly to the mobile's APP. The user may choose to connect through Bluetooth as well (Please review the different ways of connection at page 2 and 3, for a more detail explanation).





## There are two operating modes on the scanner

1.Data Transmission mode(Default)	
	
<b>It is a necessary to scan "clean memory data" when switching between these two modes.</b>	
Within Bluetooth radio range	Beyond Bluetooth radio range
Data read	Save data in scanner's memory, scanner will transmit data to smartphone/tablet automatically after getting back to Bluetooth radio range.
Transmit data to smartphone/tablet directly	
Enter Data Storage mode	
LED	Green/ Orange LED flashes, followed by 3 beeps.
2. Data Storage mode(Batch Mode)	
	
<b>It is a necessary to scan "clean memory data" when switching between these two modes.</b>	
Data read	Save data directly to scanner's memory. It will transmit data to smartphone/tablet after you scan the <b>Transmit memory data</b> code. To delete data, please scan the <b>Clean memory data</b> code.
Enter Data Transmission mode	
LED	Green/ Orange LED flashes followed by 3 beeps.
	Always <b>Clean memory data</b> before switching to Data Transmission Mode. Otherwise Red/ Orange LED will flash with one long beep sounds and will not switch modes.

### A. Data Transmission mode (Default)

- When you are out of BT signal range, the data you scan will be saved to memory. Once you are back within range, the data will be sent to smartphone/tablet automatically.



**Transmit memory data**  
Green/Orange LED flashes followed by 3 beeps

The barcode data which is stored in the memory will be sent to smartphone/tablet directly. (under Batch mode, within Bluetooth service range)



**Clean memory data**  
Green/Orange LED flashes followed by 3 beeps.

The barcode data which is stored in the memory will be deleted. You can then switch modes.

### B. Data Storage mode(Batch mode)

- Data Storage mode (Batch mode): When you scan the barcodes, the data will be saved directly to scanner's memory. After you scan the **"Transmit memory data"** code (above right), the data will be sent to smartphone/tablet.
- Before you can continue to scan or switch modes, you must first delete the data stored in the memory. To do this, scan the **"Clean memory data"** code. (below right)

## Transmission Speed

Transmission speed is dependent on your device. In order not to lose data, please choose the correct speed. Middle-speed is the Default.



High-speed transmission  
(for HID, SPP)



Middle-speed transmission  
(for HID only, **HID Default**)



Slow-speed transmission  
(for HID/SPP, **SPP Default**)



Ultra Slow-speed 1  
transmission  
(for HID only)



Ultra Slow-speed 2  
transmission  
(for HID only)



Ultra Slow-speed 3  
transmission  
(for HID only)

## Power-saving Mode



Power-saving mode OFF



Power-saving mode ON  
**(Default):** Enter power-saving mode after one minute inactivity. This function conserves battery power. When you press the "SCAN/Power ON" button, it will wake up and begin to scan.

\* When charging, the scanner will not enter power-saving mode automatically.

## Battery information



When you scan this setting code, scanner will output the battery information to device.



Output battery information automatically – **Enable**  
Will send data to device every 30 seconds.



Output battery information automatically – **Disable**.

The output format of battery information is as below:

For example: %^4^%

%^NUMBER^% Number is from 0~4.

4 means 80%~100%

3 means 55%~80%

2 means 30%~55%

1 means 10%~30%

0 means under 10% -- When output reads "0", it means low battery power and device should be charged immediately.

## Symbologies – 1

ENABLE 	<u>CODE 39</u>	DISABLE 
ENABLE 	<u>UPC-A</u>	DISABLE 
ENABLE 	<u>EAN-13</u>	DISABLE 
ENABLE 	<u>EAN-8</u>	DISABLE 
ENABLE 	<u>CODE 93</u>	DISABLE 

## Symbologies – 2

ENABLE 	<u>CODABAR</u>	DISABLE 
ENABLE 	<u>INTERLEA VED 25</u>	DISABLE 
ENABLE 	<u>INDUSTR IAL 25</u>	DISABLE 
ENABLE 	<u>MSI</u>	DISABLE 
ENABLE 	<u>PLESSEY</u>	DISABLE 
ENABLE 	<u>CODE 11</u>	DISABLE 

## Symbologies – 3

ENABLE 	<u>MATRIX 25</u>	DISABLE 
ENABLE 	<u>POSTCO DE 25</u>	DISABLE 
ENABLE 	<u>AVIATI ON 25</u>	DISABLE 
ENABLE 	<u>GS1 Omnidir ectional</u>	DISABLE 
ENABLE 	<u>GS1 Limited</u>	DISABLE 